

AMERICAN ASSOCIATION OF UNIVERSITY WOMEN

Lewis County Branch

June 2010

OFFICERS 2009-2010

President Nancy Leventon
Program Vice Presidents Judy Bell,
Kristi Nelson and Ann Tuning

Membership Vice-Presidents
..... Kerry Serl & JoAnne Watson

Secretary Mary Metzger

Treasurer Donna Loucks

Art Group Bonnie Blake

Book Sale Donna Loucks

Bridge Group Joy Carter

Day Trippers Donna La Lond

Directory Co-Chairs.
Sue Verley & Nancy Leventon

Diversity Chair Mary Alice Eberle

EF Program Chair Barb Selis

Evening Book Group Nancy Leventon

EYH Co-Chairs Jan Snider
and Alice Forth

Historian Priscilla Tiller

Hostess Coordinator

International Chair Barb Selis

Legal Advocacy Fund Barb Selis

Morning Discussion Norma Green

Newsletter Editor Dale Eden Carroll

Peaks & Trails Judy Bell & Barb Selis

Profiles Judy Lyon

Scholarship Committee Chair
..... Priscilla Tiller

Sunshine Chair Marilyn Lindell

Travel Group Donna Louks

May Branch Meeting

Thursday, June 3, 2010

6:00 p.m.

The Gathering Place (Community Room) at
Stillwaters Estates

We will celebrate our last meeting of the year with a social time together. Please bring a potluck dish to share with others and bring a beverage if you wish. We will discuss program ideas for the coming year.

**Remember to arrive at
Stillwaters before the
gate closes at 6:00 p.m.**



PRESIDENT'S MESSAGE

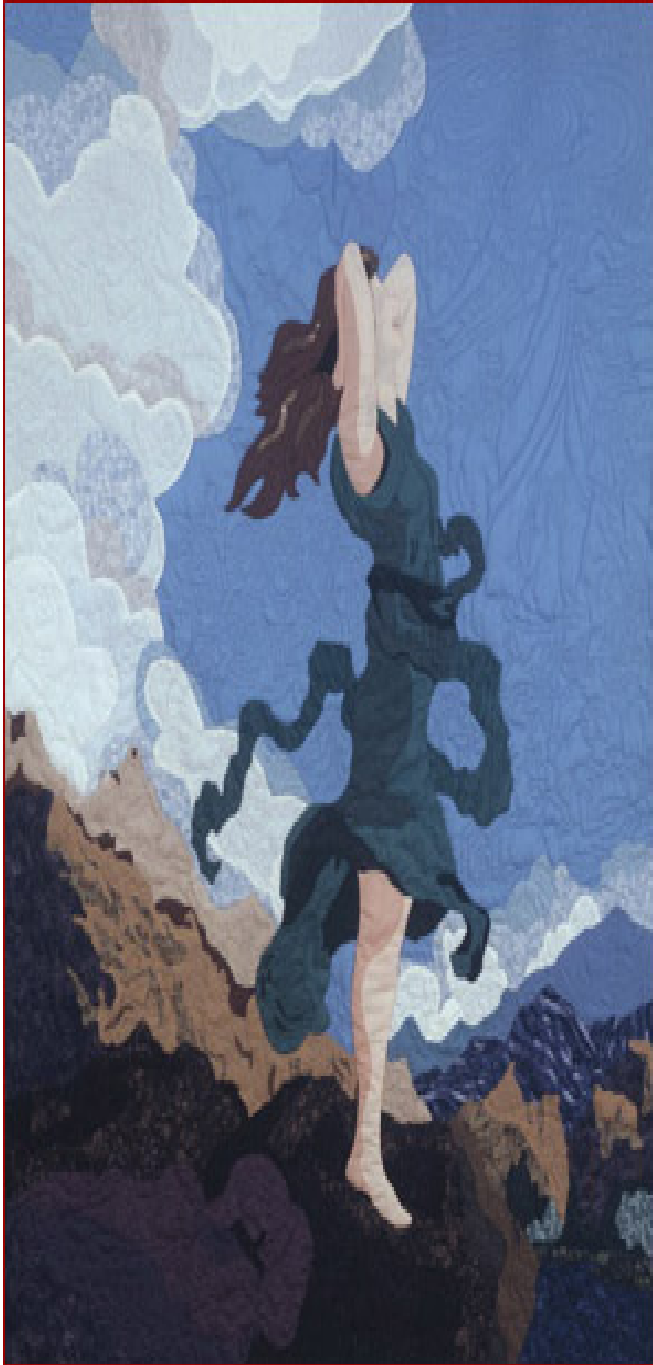
I would like to thank everyone who helped make this membership year a success. We had the challenge of a new meeting place and a gate to deal with. Stillwaters has been most gracious to allow us to use their beautiful community room. We are most thankful for that. It has been fun to have Stillwaters residents as our guests as well. I would like to thank Kerry Serl and JoAnne Watson for their services this last year with membership. Dale Carroll has created a beautiful newsletter each month. Donna Loucks has organized another successful book sale! We could not have a better coordinator for that event. Jan Snider and Alice Forth took on Expanding Your Horizons this last fall. Sharon Lyons immediately volunteered to coordinate the hostesses last year. Judy Bell, Ann Tuning and Kristi Nelson all volunteered to assist with programs this last year.

As I have said many times, it takes many hands to make an organization function well. I have been so appreciative of our membership volunteering to help with many aspects of our community presence.

Our final meeting of the year will be coming up soon. It will be a social event with no program as such. But it will also be an opportunity to participate with planning for the coming year. Be thinking of program ideas you might have to share with our program vice presidents, and plan to sign up for a hostess committee spot if you didn't already do so this last year. If you are a member of the old/new board, this is an important meeting to attend. This would be a perfect time to ask an acquaintance to come to a meeting.

I will look forward to seeing many of you at the June meeting. It should be a fun time spent together.

Nancy Leventon



MEMBERSHIP
Kerry Serl 266-0209

DUES ARE DUE!

MEMBERSHIP RENEWAL TIME

It's that time again! AAUW National is offering online registration (instructions below). You are still welcome to renew the same way you always have. Please fill out the form included in this newsletter and bring it to the June meeting with your check made out to "Lewis County, AAUW" for the appropriate amount for your membership category, or mail the check and your completed form to Kerry Serl, 282-28 Woodard Rd, Chehalis, WA 98532.

Whatever method you choose for renewing your membership for 2010-2011, please be sure to renew by the June potluck. We need to copy the forms and checks, deliver them to Donna and enter the information into the AAUW website by July 1. Entering renewals after July 1 is A LOT more work for our treasurer.

WOULD YOU PREFER TO RENEW BY CREDIT CARD?

You can now renew your national, state and local dues by credit card by going online to the national AAUW web page. If you want to do this, please follow these steps:

- 1) Log on to www.aauw.org
- 2) Enter the Member Center. You will need your Member Number, but there is an online option for finding it if you don't know it.
- 3) If you have not used the Member Center before, you will need to create a password. Write it down for future use!
- 4) Choose the Member Service Database
- 5) Choose Membership Renewal Dues Payment Process. Follow the steps.

This is a new process for national and even newer for us, so if you are unable to get it to work, please help them make it more user-friendly by contacting the national office or asking Donna Loucks (loucksd@localaccess.com) for help.

If you do choose to pay online, please still fill out the membership form and send it to Kerry Serl or e-mail the information to Sue Verley and Kerry Serl. This information is used to update the directory.

PORTION OF DUES ARE TAX DEDUCTIBLE

A portion of the national yearly dues (\$46) is tax deductible. AAUW National Life Membership dues (one time payment) of \$980 are fully tax deductible. Branch/state membership dues are not tax deductible.

NEW MEMBERS

We have two new members: Marci Anholt and Catherine Clark. Catherine recently moved to Centralia from Idaho, although she grew up in Longview. She is an artist and owned an art gallery in Idaho. Marci is also an artist in stained glass. Marci is also in the Guardian Ad Litem Program.

ART GROUP

Bonnie Blake

Art Group will not meet until August. Details will be sent out via email.



BRIDGE GROUP

Joy Carter

The Bridge Group meets on the 1st and 3rd Tuesdays of each month at 1:00 p.m. Call Joy for location details. Newcomers and beginners are always welcome.



PEAKS AND TRAILS

Judy Bell

Saturday, June 19 - 3rd Saturday of the Month

We'll hike the High Lakes Ramble trail to see a Chain of Lakes in the Gifford Pinchot National Forest, southeast of Randle. The hike is 5.4 miles RT with 200 ft. elevation gain. If it's a clear day, there should be views of Mt. Adams.

If you are interested, please contact June hike leader Norma Green. Meeting times and places will be determined when I know who will be hiking. An e-mail will be sent out.

If it is learned that impassable road or trail conditions exist, a similar hike will be selected; and you will be notified.

EARLY MORNING DISCUSSION

Norma Green

The Early Morning Discussion Group will meet Thursday, June 10, at 7 a.m. at Kit Carson's Restaurant to conclude our year of discussing American Icons and to select an overall topic for 2010-2011.

The topic for June is **Shirley Temple**, with Jan Snider leading the discussion. We will also cover two music icons that we didn't have time for at the May meeting: Leonard Bernstein, and Dixieland Jazz.

In considering a topic for next year, we have looked at a number of topics from recent years' lists. At the May meeting, the topic of most interest was: **The Arab World**, its culture, archaeology, history, conquest and contributions to the rest of the world. Also, interest was expressed for **Britain** and all its aspects, from its history, kings and queens, religion, gardens, and ancient monuments to the amazing English language.

Join us on June 10 for breakfast and a very interesting discussion on these topics.

TRAVEL GROUP

Donna Loucks

Travel Group will not meet during the summer. Enjoy your summer travels, whether they are near or far! We will meet again in September.

TRAVEL MISCELLANEOUS

Travel to Havana, Cuba

Barb Selis will be talking about her trip to Havana at the Salkum Library, Saturday July 10 at 2 p.m. If you missed the Travel Group here's your chance to hear about her stay and see her photos.

EVENING BOOK GROUP

Nancy Leventon

The June meeting of the Evening Book Group will be on Tuesday, June 15 at the home of Sharon Lyons at 6:00 p.m. The book for discussion is The Book Thief by Markus Zusak. Jan Leth will be leading the discussion. This meeting will be our annual dinner at Sharon's beautiful farm home setting. Bring a salad, appetizer or dessert to share with others. If you wish, you can also bring a beverage to share. If you need directions to Sharon's house, let me know and I will send them to you. Please let Sharon know that you will be coming.

PLANNING AHEAD: The July meeting will be on Tuesday July 20 at the home of Jan Leth. The book will be The Last Town on Earth and Sharon Lyons will be leading that discussion.

The August meeting will be on Tuesday, August 17 at the home of Kay Raupp. Jan Snider will lead the discussion of The Botany of Desire by Michael Pollan.

The reading list for the coming year was decided. Not all the details have been established quite yet.

The titles and authors are:

The Help Katherine Stockett

Nonviolence Mark Kurlansky

Into the Beautiful North Luis Alberto Urrea

Half the Sky Nicholas Kristof

The Madonnas of Leningrad Debra Dean

Books related to Cuba

The Post-American World Fareed Zakaria

Loving Frank Nancy Horan

The 19th Wife David Ebershoff

Major Pettigrew's Last Stand Helen Simonson

BITS n PIECES

GIVE A GRAD A GIFT

AAUW members can give a recent graduate - a friend, daughter, granddaughter or niece - a free year of national AAUW membership at no cost to you or her! Although Lewis County will also extend this offer for a year of free membership to a recent graduate, the state still asks for their \$8. If you'd like to sign up a graduate, you can sign her up as a Member At Large or pay for state membership. Membership in AAUW is open to any graduate holding an associate or equivalent, bachelor's degree or higher from a regionally accredited institution. Student affiliates are enrolled in an associate's or bachelor's degree program at an accredited two or four-year institution.

Sign up graduates on the AAUW website at: <https://svc.aauw.org/join/gradgift.cfml#eform> or ask me for a form.

AAUW DIRECTORY

If your photo was not included in last year's directory or you would just like a more flattering photo in the directory, there are two options. I will bring a camera to the potluck to take photos of everyone who is interested. If you have a great photo you would like us to use, please e-mail it to me (full sized) at fishandleaf@msn.com or mail it along with your membership dues. The photos will be photocopied in black and white so choose photos with a light, uncluttered background.

Endowment Fund

Donations to the Lewis County Branch Endowment Fund are applied to academic scholarships for women from the area. All donations are tax exempt. All endowment fund investments are insured. For further information contact Priscilla Tiller, 736-9636 or ptiller@localaccess.com

SUNSHINE REPORT

Please call Marilyn Lindell to let her know of any members and their families whom we want to keep in our thoughts.

June, July and August Birthdays

Happy Birthday!

June

Sandy Godsey (7)
Ann Lonergan (10)
Eleni Palmisana (25)
Rebecca Staebler (26)

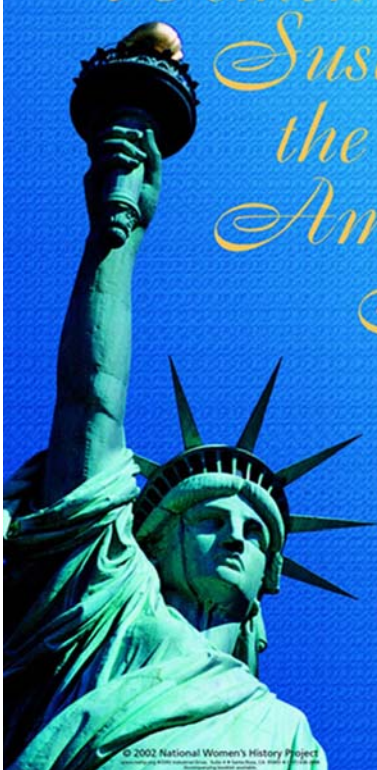
July

Bonnie Blake (23)
Jan Leth (25)

August

Nancy Leventon (5)
Jan Snider (22)
Mary Alice Eberle (22)
Doris Lodwig (30)

NATIONAL WOMEN'S HISTORY MONTH ♦ MARCH 2002



Women Sustaining the American Spirit

Mary Louisa Deland Wilson
(b. 1930)
Celebrating and keeping alive the spirit of the Okaloosa-Cherokee people through storytelling, her work serves as an essential cultural bridge for America's 21st Century.

Gerda Lerner
(b. 1920)
The feminine pioneer in defining the scope and importance of women's history, in 1981 she became the first woman in fifty years to be elected president of the Organization of American Historians.

Alice Coachman
(b. 1921)
The first African American woman to win an Olympic gold medal in track and field, breaking the Olympic record in the high jump at the London Olympics in 1948.

Dulcie Hayter
(b. 1902)
Recognizing and honoring the spirit of the American workers' and sportspeople movement, she co-founded and led the United Labor Workers Union.

Dorothy Height
(b. 1921)
President of the National Council of Negro Women for over 40 years and recognized as one of the most significant leaders for equality and human rights for all people. Pictured in photo with Eleanor Roosevelt.

Congresswoman Patsy T. Mink
(b. 1927)
The first Asian American woman elected to the U.S. House of Representatives, she authored a key vote in the enactment of Title IX, expanding women's educational opportunities.

© 2002 National Women's History Project
www.nwhp.org
1000 17th Street, NW, Suite 1000, Washington, DC 20036
202-331-1000

CALENDAR

- Tuesdays, June 1 & 15Bridge Meeting
Thursday, June 10Early Morning Discussion
Tuesday, June 15Evening Book Group
Saturday, June 19Hiking Group

LEWIS COUNTY BRANCH
AMERICAN ASSOCIATION
OF UNIVERSITY WOMEN
1582 SW Grandview
Chehalis, WA 98532